



SUPERIOR PRODUCTS INTERNATIONAL II, INC.

LEAD-BASED PAINT ENCAPSULATION USING RUST GRIP® Gadsden Truss Bridge – Gadsden, Alabama

Before and after pictures of a 660' truss bridge over the Coosa River that contained lead-based paint located in Gadsden, Alabama.

The lead-based paint was encapsulated with Rust Grip® only for this particular project to meet the grant budget requirements.

1. We were able to complete the bridge project in 30 days with very minor traffic disruptions.
2. We received approval from the U.S. Army Corp of Engineers to catch the lead-based paint in tarps so that we could release the water back into the river.
3. We stored the lead based paint in containers that were picked up by an Alabama state approved hazardous waste management company that collected and disposed of the waste according to local, state, and federal laws.
4. The project was completed without any environmental or safety violations.

The City of Gadsden is very pleased with the results. Shane Ellison, Assistant to the Mayor, City of Gadsden.



A CENTURY LATER

102-Year Old Bridge Gets A Facelift

CSX Railroad Bridge - Gadsden, Alabama



CSX RAILROAD BRIDGE PROJECT
GADSDEN, ALABAMA
APRIL 2011



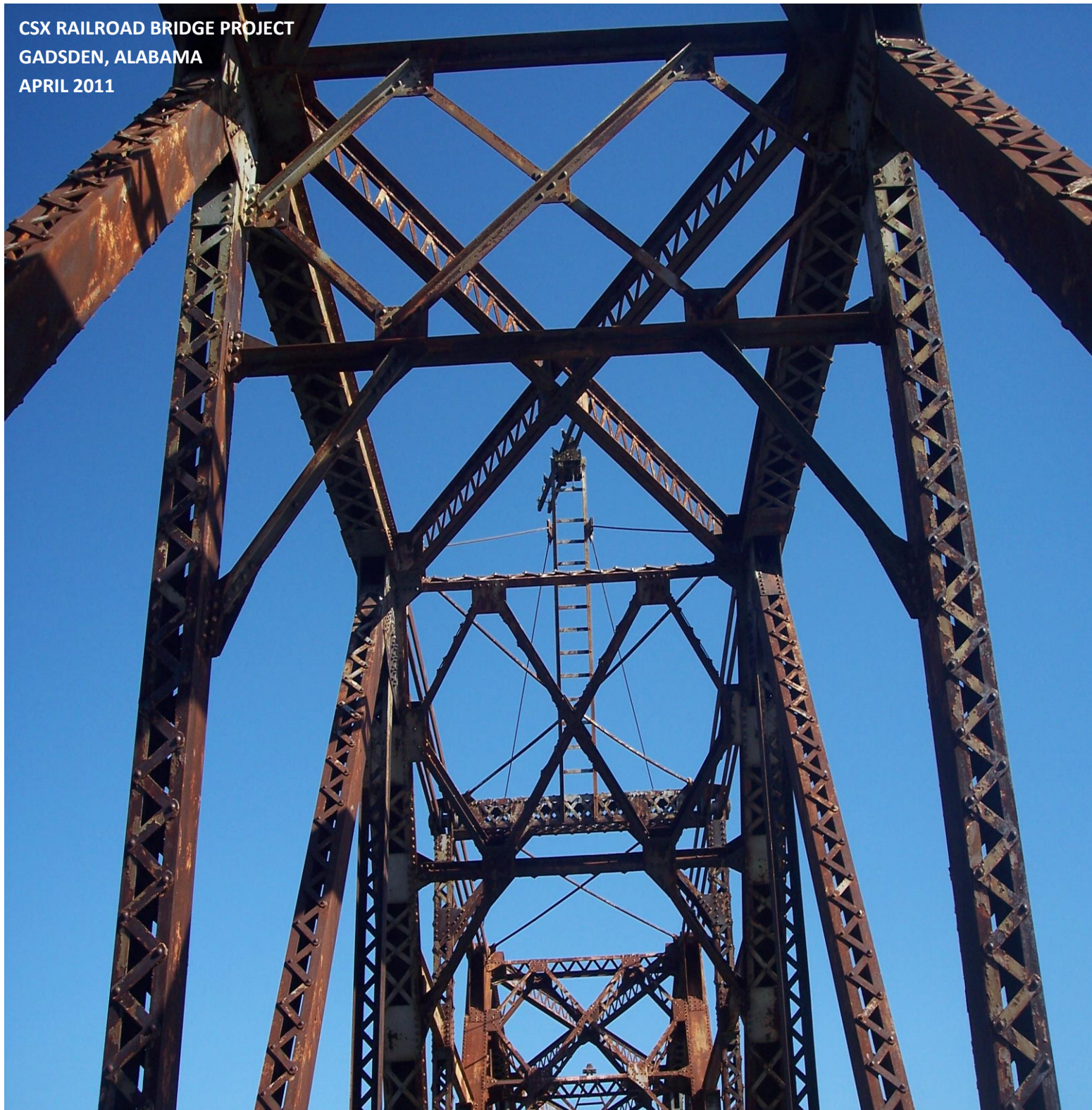
CSX RAILROAD BRIDGE PROJECT
GADSDEN, ALABAMA
APRIL 2011



CSX RAILROAD BRIDGE PROJECT
GADSDEN, ALABAMA
APRIL 2011



CSX RAILROAD BRIDGE PROJECT
GADSDEN, ALABAMA
APRIL 2011



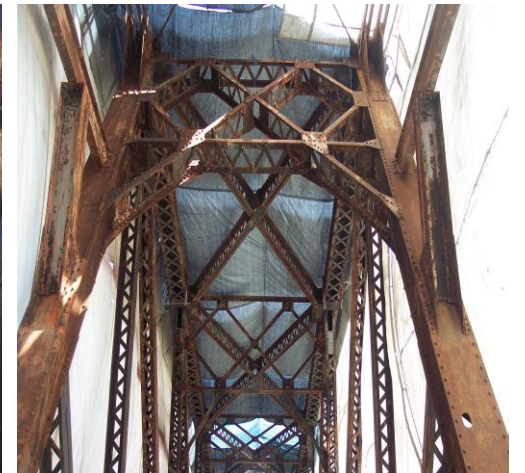
CSX RAILROAD BRIDGE PROJECT
GADSDEN, ALABAMA
APRIL 2011



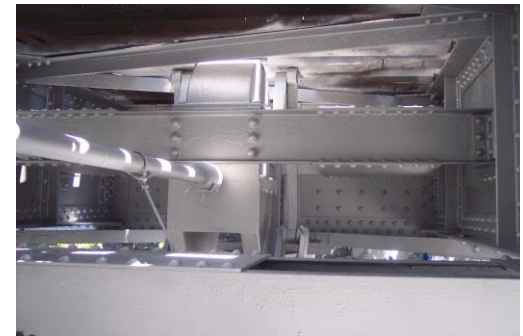
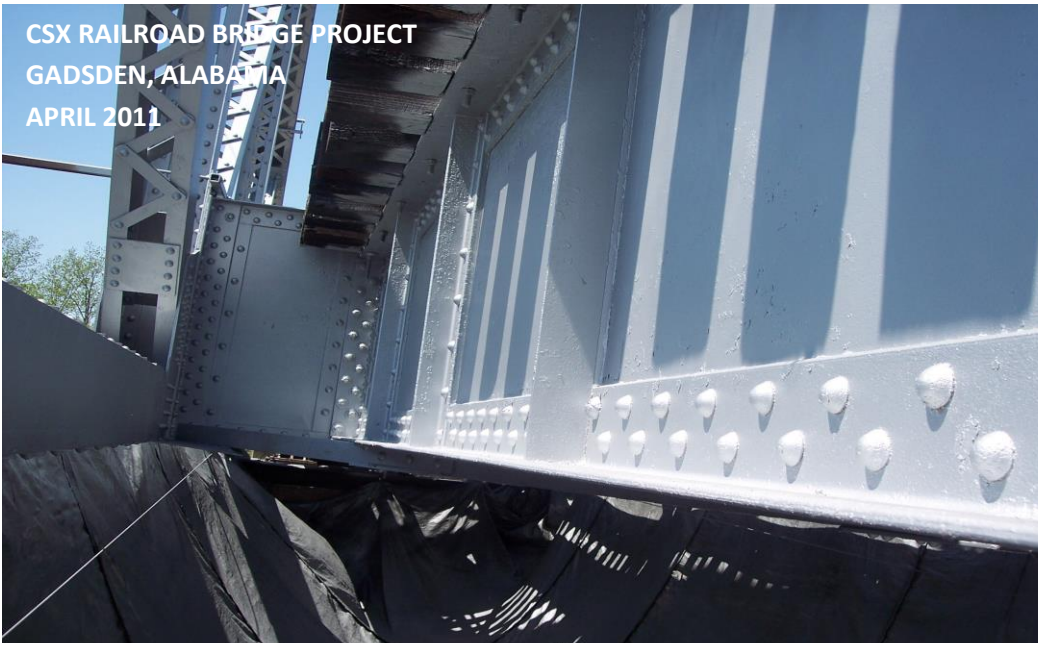
CSX RAILROAD BRIDGE PROJECT
GADSDEN, ALABAMA
APRIL 2011



CSX RAILROAD BRIDGE PROJECT
GADSDEN, ALABAMA
APRIL 2011



CSX RAILROAD BRIDGE PROJECT
GADSDEN, ALABAMA
APRIL 2011



A CENTURY LATER

102-Year Old Bridge Gets A Facelift

CSX Railroad Bridge - Gadsden, Alabama

