

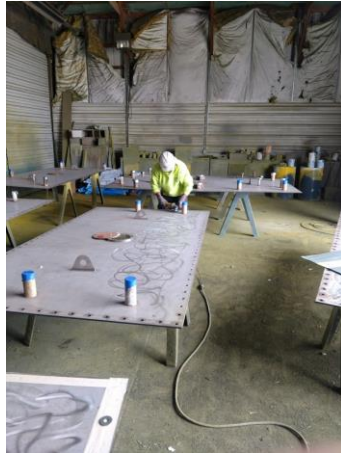
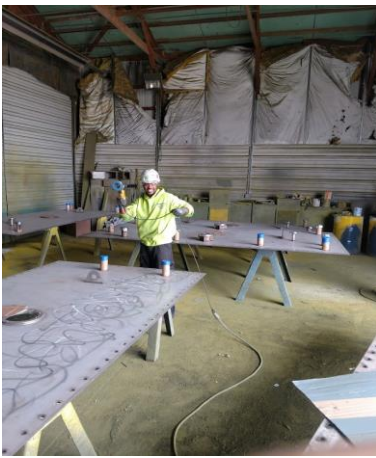
BUNGE NORTH AMERICA ~ INDIANA

June 2019

Problem: Reduce heat loss on 2040 ft² of Soy Bean extractor lids. 33 lids various sizes from 1.5 ' X 2' to 7' X 10 '. Bring surface temperature down to OSHA standard of 140°F and stand up to the physical abuse of constant removal while sometimes being walked on.

Solution: A Functional Coating, HSC® Coating Multi ~ Ceramic Insulation Coating Engineered to Block Heat up to 176°C / 350°F was applied in 2 coats cross hatched at 71.43 mils WFT \ 50 mils DFT for thermal control and a Functional top coat of RUSTGRIP® was applied in 2 coats cross hatched at 12 mils WFT \ 6 mils DFT with reinforcing mesh and an aggregate for traction to stand up to the abuse.

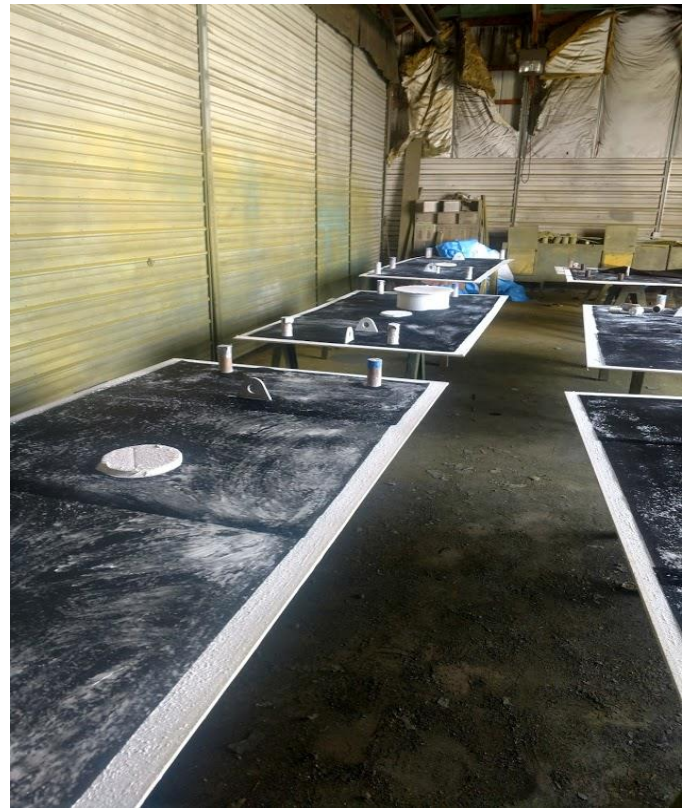
Surface preparation with a grinder to create a mechanical profile and masking



HSC Coating applied in 2 coats cross hatched to 50 mils DFT



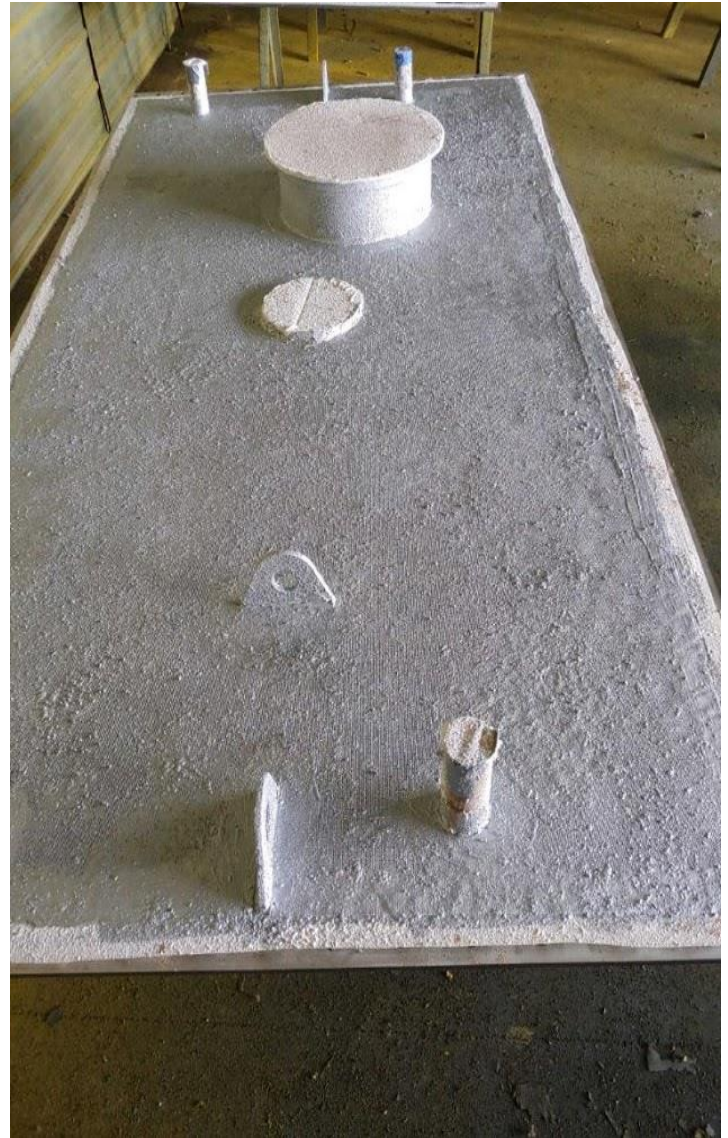
1st coat of Rust Grip with reinforcing mesh



Aggregate and 2nd coat of Rust Grip



Finished Doors



PROJECT CREDITS:

Project Manager: Douglas Pearce

Certified Contractor: [Industrial Insulation Supply, LTD.](#)

Project Coordinator: Nate Painter Tel: (260) 438-5692

industrialinsulationsupplyco@gmail.com