

## Filtration Duct Interior Coating

October 14, 2006

**APPLICATION AREA:** Interior of SDR Filtration Collector Ducts - 6mm Steel

**PURPOSE :** Corrosion Prevention

**METHOD:** Removed moisture with MEK Applied **RUST GRIP**® two times (Ave. 200~250microns)

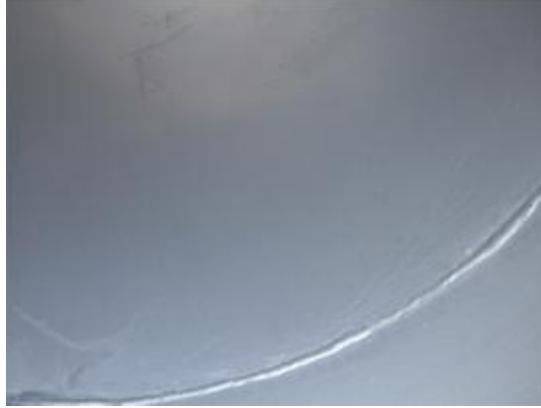
**Ducts**Duct 1 before coatings



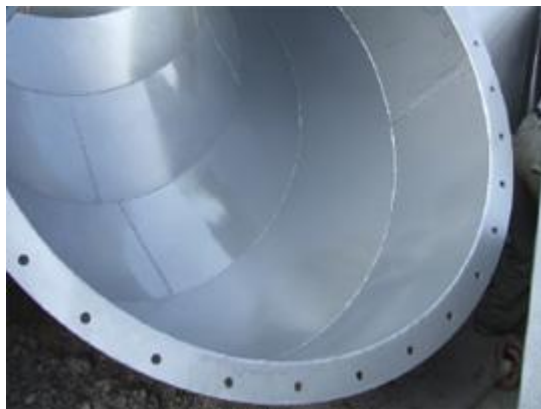
**Duct 2 before coatings**Magnified View



**1st Application of RustGrip**RustGrip after 1st coating



**2nd application of RustGripRustGrip after 2nd coating**



**Filtration Interior facility after coating**



